



# City of South Daytona Bid Addendum

<b>Bid Number:</b>	23-012
<b>Bid Title:</b>	Rehabilitation of Sanitary Sewer Manholes and Wet Wells
<b>Bid Opening Date:</b>	2:00 P.M. on Tuesday, May 30, 2023
<b>Bid Addendum Number:</b>	1
<b>Bid Addendum Date:</b>	May 17, 2023

***Questions Received. Answered from the City of South Daytona are in RED.***

1. Can Protective Liner Systems PerpetuCoat be accepted as an approved "or equal" on this bid in lieu of Raven 405? **No**
2. Can Protective Liner Systems PerpetuWall be accepted as an approved "or equal" on this bid in lieu of the single and multi-layered cured in place lining systems? **No**
3. For all the lining systems installations including the cured in place liners, are all the interior manhole surfaces expected to be rebuilt back to the original wall thickness and have voids like cracks and missing mortar in between bricks refilled before the liners are installed?

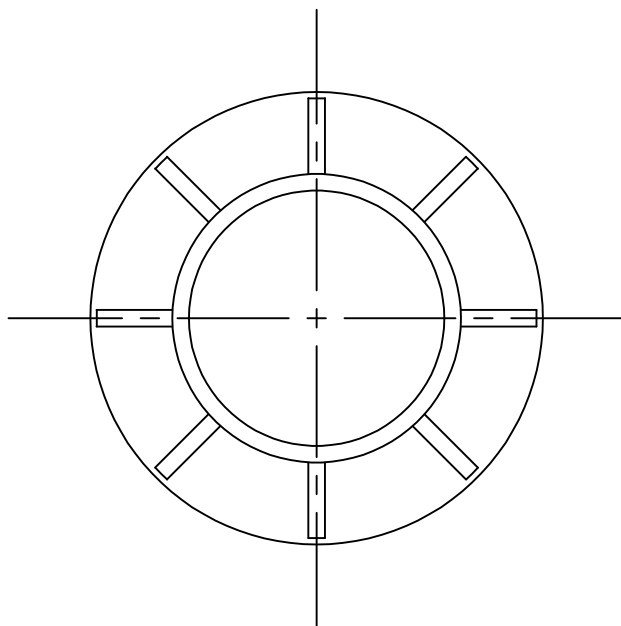
***All open joints, voids, holes, cracks, and missing bricks larger than 3 inches in diameter or equivalent shall be patched with a cementitious material to provide a smooth surface for the liner to bond. All loose, cracked or disintegrated material shall be removed from the area to be patched exposing a sound substrate.***

4. For line item 11, are these to be priced per manhole like the bid form states or per cubic yard of cement needed to build the benches and inverts as referenced in the Scope of Work section?

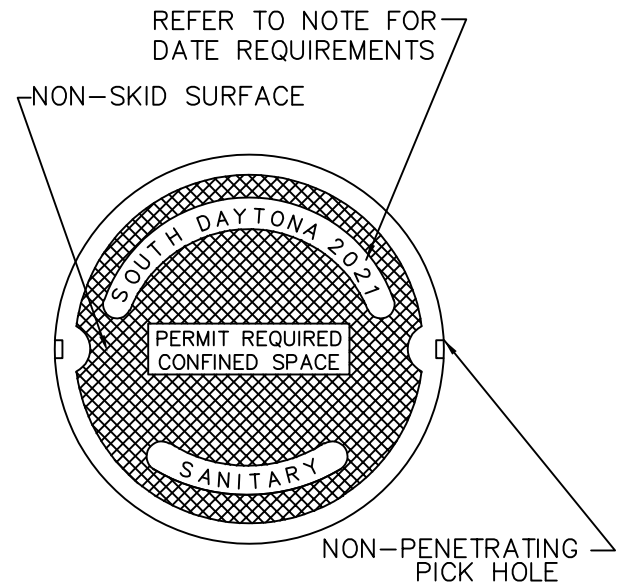
***Please price per Each as per the Bid Form.***

5. What is the specification for the ring and cover? (model, design and markings)

***See attached "Standard Detail for Manhole Rings and Covers."***



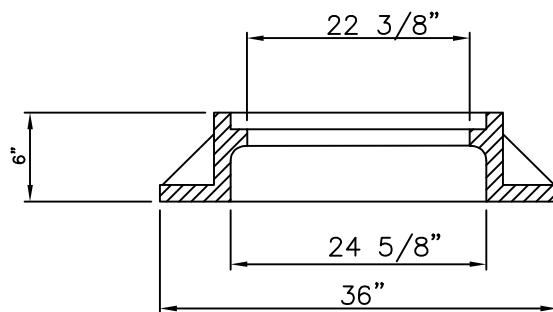
RING TOP VIEW



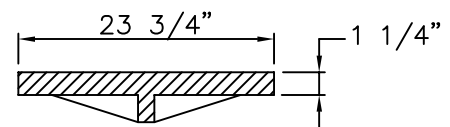
COVER DETAIL

N.T.S.

NOTE: FOR PRIVATE SANITARY SEWER SYSTEMS, REMOVE CITY OF SOUTH DAYTONA NAME



RING SECTION



COVER SECTION

NOTE: MANHOLE RING AND COVER SHALL CONFORM TO FDOT STANDARD INDEX 201, SHEET 1 OF 6, AS SHOWN IN ROADWAY TRAFFIC DESIGN STANDARDS.

NOTE: YEAR STAMP TO MATCH CASTING YEAR

U. S. FOUNDRY 195E-ORS ("O" RING SEAL) OR APPROVED EQUAL

COVER TYPE	LOAD RATING	COVER WEIGHT	TOTAL WEIGHT
BJ	HEAVY DUTY	200	350

FOR MANHOLES IN FL. D.O.T. R/W OR AS DETERMINED BY THE CITY. THE COVER TYPE SHALL BE - BJ HEAVY DUTY 200 LBS W/ ORS.



STANDARD CONSTRUCTION DETAIL  
MANHOLE RING AND COVER DETAIL  
N.T.S.

INDEX

S-9B

OCT 2021