

City of South Daytona

Department of Public Works

1770 Segrave Street • South Daytona, FL 32121 • 386/322-3080



MEMORANDUM

To: James L. Gillis Jr., P.E., City Manager
From: Brian Peek, P.E., Public Works Director
Re: Consideration of approving a proposal from P&S Paving in the amount of \$126,085.02 for the resurfacing of Oriole Lane in its entirety as budgeted in the current fiscal year.
Date: March 24, 2022

Funds were scheduled in the FY 21-22 budget for resurfacing Oriole Lane in its entirety. The budget amount of \$120,000 is slightly low due to an increase in the contract price. Volusia County's contract, which we are using for cooperative purchasing, allows for a yearly price redetermination. The pricing is tied directly to the cost of fuel and minimum wage. Both of which have increased in the last year. P&S was contacted for an official quote for this paving in our City.

The attached proposal in Appendix "A" reflects the updated pricing and is \$6,085 above our budgeted cost. This overage is covered by other items in the budget that came in under projected cost.

Staff recommends the approval of the proposal submitted by P&S Paving for the resurfacing of Oriole Lane (utilizing a piggy-back of their agreement with Volusia County) as budgeted in the current fiscal year. If approved, the resurfacing project will be scheduled by the contractor to be completed within the next 120 days.

Appendix "A"



Proposal

To: **City of South Daytona**
1770 Segrave Street
South Daytona, FL 32119

Date: 3/22/2022

Job Name: Oriole
Big tree to end
Location: South Daytona
Phone:
Email:

Attn: **Brian Peek**

	Description	Quantity	Unit	Unit Price	Extension
1.	1.5" Milling	10568	SY	\$3.32	\$35,085.76
2.	1.5" SP 12.5	872	TN	\$103.58	\$90,321.76
3.	6" Yellow Solid Paint	200	LF	\$1.25	\$250.00
4.	12" White (cross walk)	75	LF	\$2.50	\$187.50
5.	24' White (Stop bar)	48	LF	\$5.00	\$240.00
Bid Total					\$126,085.02

Notes and Qualifications

1. All permits and fees by others
2. This proposal is quoted as performing all paving in one mobilization.
3. Pricing base on Volusia County Contract 20-B-40JD with price redetermination

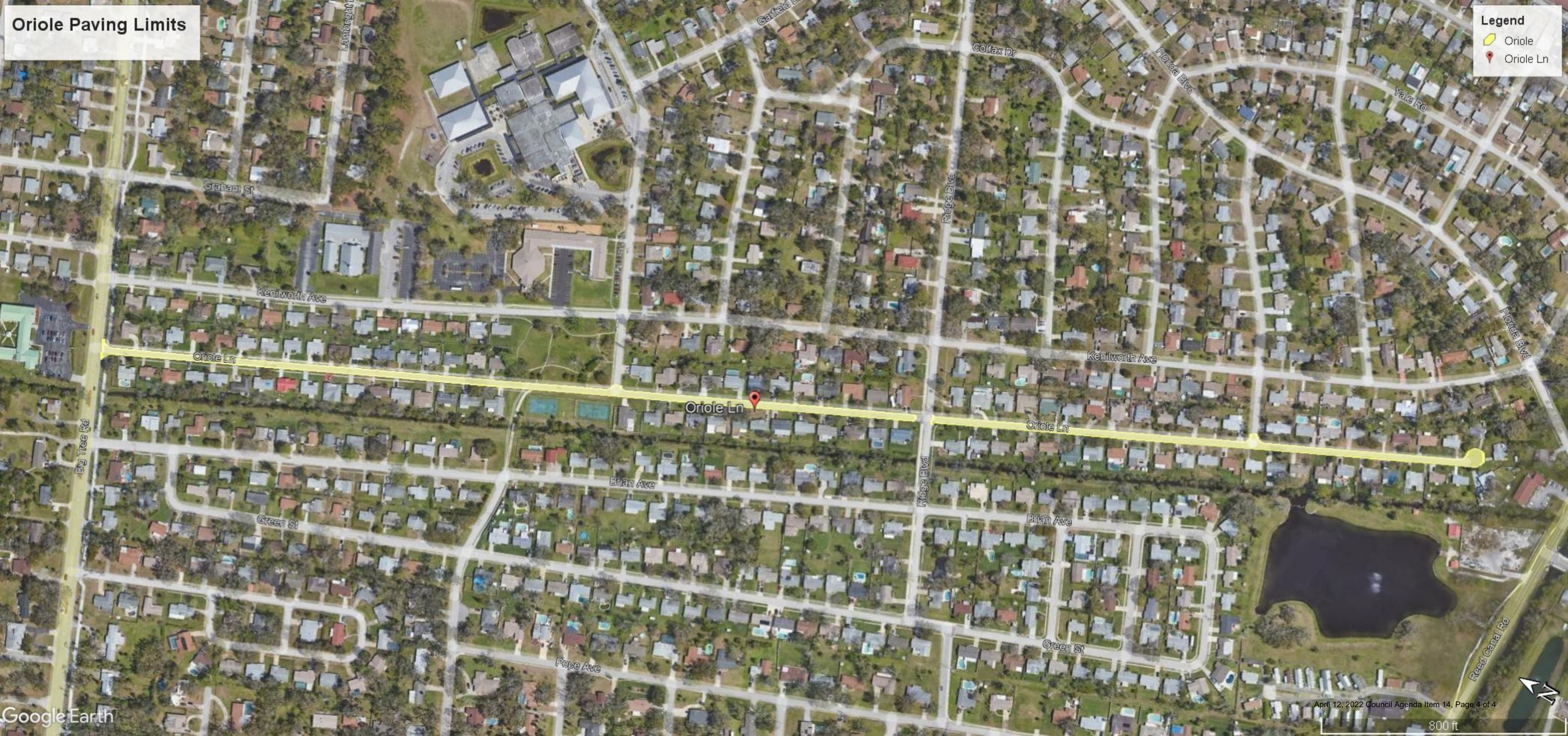
Note: This proposal may be withdrawn by us
if not accepted within Thirty (30) days.

Submitted by: Brian W. Davidson

Date: 3/22/2022

ITB: 20-B-40JD		
Asphaltic Concrete and Removal of Existing Surfaces by Milling	P & S Paving, Inc.	
A.001 Type SP-12.5 Asphaltic Concrete	Current Pricing	Approved Price Increase
Price Per Ton, FOB Plant*	\$62.00	\$68.44
Price Per Ton, In Place Less than 200 Tons	\$125.00	\$137.97
Price Per Ton, In Place Less than 200 Tons, delivered within 24 hours	\$175.00	\$193.16
Price Per Ton, In Place More than 200 Tons	\$88.00	\$97.13
Price Per Ton, In Place More than 200 Tons delivered within 24 hours	\$98.00	\$108.17
A.002 Type SP-9.5 Asphaltic Concrete		
Price Per Ton, FOB Plant*	\$64.00	\$70.64
Price Per Ton, In Place Less than 200 Tons	\$130.00	\$143.49
Price Per Ton, In Place Less than 200 Tons, delivered within 24 hours	\$180.00	\$198.68
Price Per Ton, In Place More than 200 Tons	\$93.00	\$102.65
Price Per Ton, In Place More than 200 Tons delivered within 24 hours	\$100.00	\$110.38
Part B: Milling of Existing Surface (Thickness @ 1.5")		
Price per Sq. Yard - Less than 2000 Sq. Yards	\$4.50	\$5.54
Price per Sq. Yard - More than 2000 Sq. Yards	\$2.70	\$3.32
Price Per Day	\$5,000.00	\$6,150.70

Price increase is in accordance with Section 2.12, Price Redeterminations of the Contract 20-B-40JD using the percentages submitted by your firm in Section 5.0, Bid Submittal Form.



Oriole Paving Limits

Legend

-  Oriole
-  Oriole Ln